



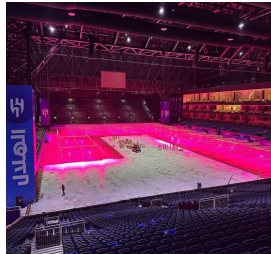
TRANSFORM YOUR STADIUM INTO A MULTI-PURPOSE PROFIT VENUE

Depend on us to unleash
your venue's potential with
industry leading turf and
ground protection solutions



The
Box
Group

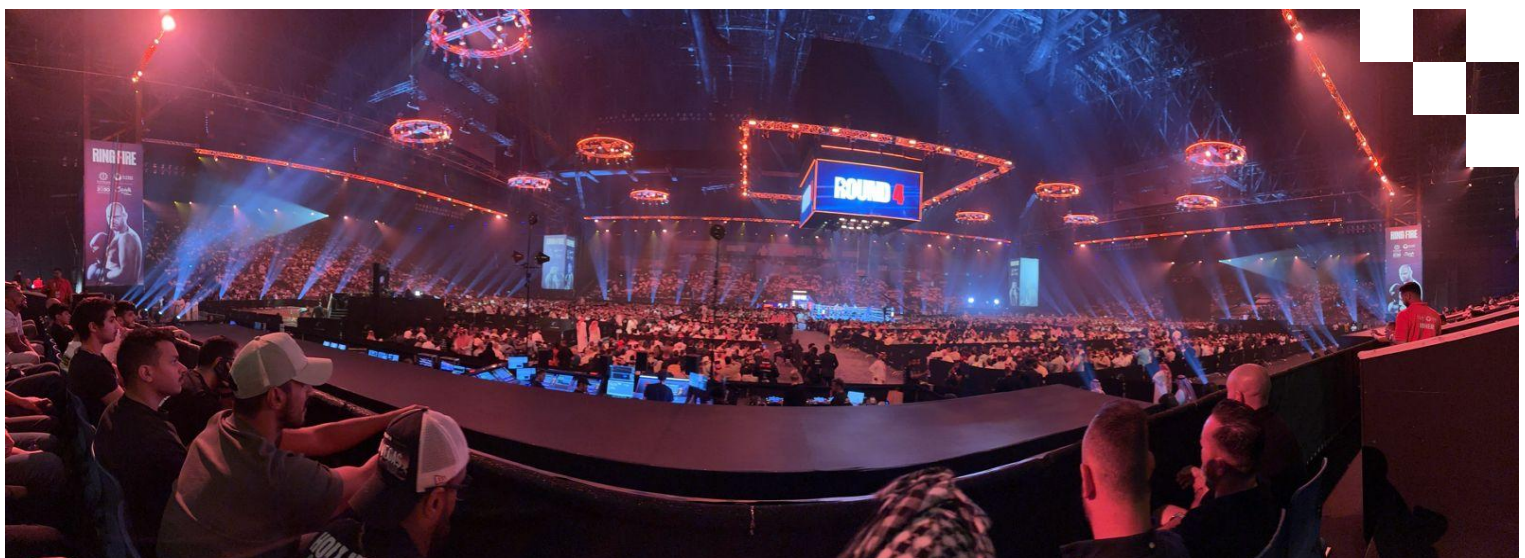
TRANSFORMING STADIUMS INTO MULTI-PURPOSE VENUES. **SINCE 1999**



Our solutions give you the capability to host to a wider range of events, maximising your revenue potential without compromising on your playing surface integrity.

At The Box Group, we work closely with stadiums and major venues, helping them unlock their full potential as multi-functional sports and entertainment hubs.

Our robust ground protection systems safeguard the integrity of natural, hybrid, or artificial turf. Whether it's heavy equipment like cranes and forklifts, bustling crowds, or massive stages, our products ensure your playing surface remains pristine for every event.



FEATURES + BENEFITS



Durable and ground-friendly

Supports substantial weight loads without damaging natural, synthetic, or hybrid playing fields. Proven performance and long-lasting systems for a profitable return on investment.

Lightweight and demountable

Our solutions are designed for easy transport, installation, and removal using your existing vehicles and personnel. This minimises downtime and maximises efficiency for your event setup and breakdown.

Modular

Inter-connectable and tailored to your use and load. Reduce costs by selecting panels specific to the different areas of your project or application.

Easy-to-clean surfaces

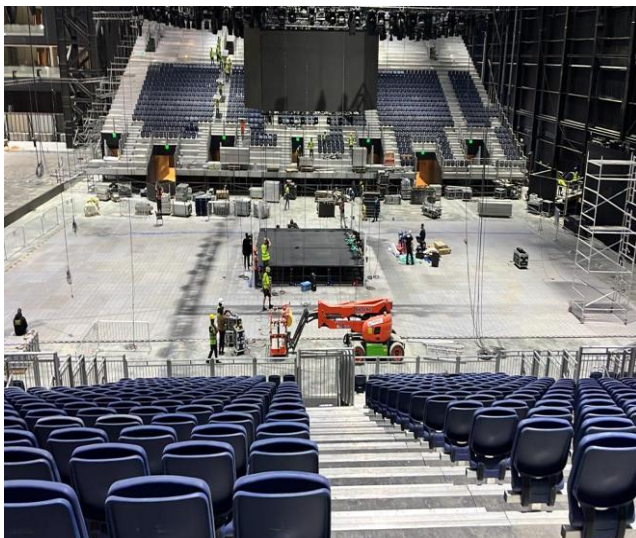
Our easy-to-clean surfaces prevent expensive damage caused by spills, dirt, and debris. This helps you maintain a pristine playing surface while minimising post-event cleaning costs.

Built-in cable storage and management (where applicable)

Keeps your operating areas uncluttered.

Sustainable

Recyclable flooring to reduce environmental impact. In some cases, we can buy back your used flooring and recycle it/dispose of it sustainably, helping you reduce overall costs.



STADIA XHD

Stadia XHD and Stadia XHD-XL are innovative, self-locking, modular road systems designed for heavy-duty temporary access.



DESCRIPTION:

Stadia XHD is an innovative, self-locking, modular road system with sixteen 5mm internal supporting up-rights incorporated into each panel for heavy-duty temporary access. It is entirely composite made from polypropylene or HDPE.

The Stadia XHD-XL variant is a hybrid version incorporating patented aluminium box beams for higher rated performance. It offers the strength of a heavy-duty system with the portability of track mats.

Both systems are ideal for protecting sensitive surfaces and providing access for heavy vehicles and rotary-wing aircraft.



KEY FEATURES:

- **Heavy-duty:** Both systems support axle weights up to 12.5 tonnes and static loads up to 150 tonnes per m² (ground-dependent) for XHD and 180 tonnes for the hybrid XHD-XL variant.
- **Self-locking:** The built-in mechanism eliminates the need for additional locking or tools, enhancing safety and ease of use (no nuts bolts cam locks, or keys).
- **Rapid deployment:** XHD is man-handlable and can be deployed at 55m² per man per hour over a period of time.
- **Efficient transport:** 52 panels per pallet, 1200m² per 40ft truck / Hi Cube container.
- **Low theft risk:** XHD-XL has no visible aluminium as it is enclosed within the panel, reducing its attractiveness to thieves.
- **Sustainable:** PPC recyclable, XHD-XL aluminium recyclable.

APPLICATIONS:

- Professional sports stadiums & athletics tracks
- Military operations and helipads
- Construction sites
- Temporary roadways / access routes
- Event flooring
- Any application requiring heavy-duty temporary access over sensitive surfaces

Material - XHD: PPCP + UV
XHD-XL: PPCP + UV + Anti-Static Aluminium box beam inserts (patent applied)

Ambient Temperature range: -30 to +50 °C

Panel size: Full Panel: 2800mm x 500mm
 2000mm x 500mm
 Half Panel: 1400mm x 500mm
 1000mm x 500mm

Max Gross vehicle weight: 12,500 kg per axle, (CBR 3>)*

Max Static Load: Up to 150,000 to 180,000 kg per m²

Panel thickness: 50 mm

Panel weight: 30 kg (full panel 2.8m) XL: 36 kg / panel
 20 kg (full panel 2.0m) XL: 25.7 kg / panel
 15 kg (half panel 1.4m) XL: 18 kg / panel
 10 kg (half panel 1.0m) XL: 12.85 kg / panel

Operating Parameters:

- Inert and non-conductive
- Resistant to solvents
- Non-corroding
- Resistant to UV damage
- XHD: UL 94 HB fire rating
- XHD-XL: British Standard BS476 non-combustible
- Resistivity 10 ohms S
- Single component system

Suitable Surfaces: Turf, Grass, Sand, and Graded Ground - optimal surfaces to be level and supporting*

*Ground dependant

AMP PANEL

AmP is the only humanly deployable aluminium panel system available. Perfect for use in remote, inhospitable and tough environments, the AmP system provides you with durable, resilient flooring - fast.



A true innovation in trackway design, the AmP provides all the functionality of a heavy-duty system combined with the portability of track mats, saving your business huge expenses.

Our hard-working, heavy duty trackway system can take up to a 12.5 tonne axle weight yet can be deployed by a JCB 926 (or similar all terrain forklift) and then manually laid. So, there's no need to settle for products that can't take the loads you need to move, or compromise when it comes to confined space solutions as AmP panels create a level playing field against standard trackway panels.

The 10-point connection allows you to create brick weave patterns with the panels, delivering more integrated strength. The use of half panels enables seamless side joins with no accessories needed.

We have the capability to manufacture the AmP system in 3 to 9 panel variants, alongside the option to produce anodized panels that will mitigate the extreme temperature in equatorial climates.

By renting forklifts and then utilising 2 or 4-person teams to lay the AmP panels, you can reduce investment costs by £180,000 (the average price for a Hiab truck) and still stay agile in the application.

Material: Aluminium

Panel size: 3000mm x 1150mm x 40mm

UV Stability:

Panel thickness: 40mm

Panel weight: 104 kg

Suitable Surfaces: Grass, Sand, Soil, Snow, Gravel, Concrete, Tarmac.

Ambient Temperature range: -45 – +45 °C

Tested at: 30 °C for 21 days, to prove grass survival

Max Static Load: Up to 100 tonnes per m²*. Cross lay achieves incredible weight-bearing capability.

Resistance to corrosion: We are not aware of any substance that would lead to the product corroding.

Resistance to Flame: Standard production meets UL94HB, however can be manufactured to any rating subject to quotation. Class 1 5%. VO rated 10%

External storage: The product is suitable for outside, uncovered storage.

Lateral inclines: AmP panels can support slopes and inclines.

Permeable to liquid:

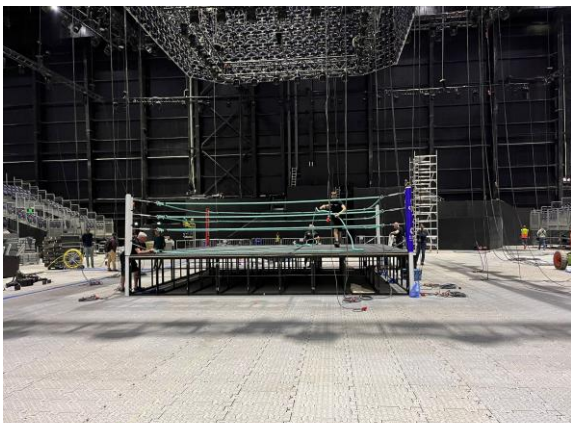
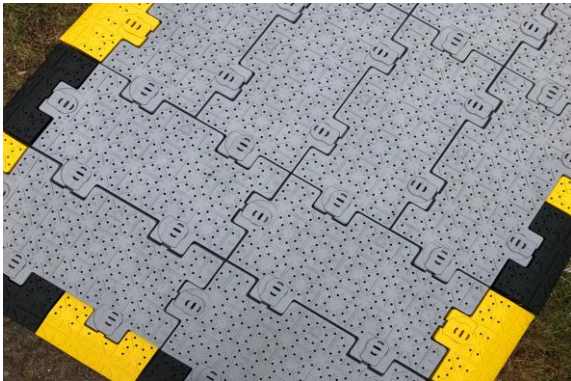
The product is not permeable to liquid. Liquid drains from the panel surface using designed holes.

*Ground dependant.

STADIA X



A true all-rounder in the world of medium-duty flooring systems, Stadia X offers resilience and versatility, in a wide range of different applications.



Stadia X not only provides excellent ground protection for pedestrian access, it is also the first product that can accommodate moving vehicles with an axle weight of up to 2.5 tonnes.

Ground-dependent, Stadia X can also withstand a high level of static loading - approximately 70 tonnes per m². Its load-bearing capacity means Stadia X can also be considered for uses such as Heli-pads or car parks.

Stadia X is ventilated to allow light air and water to penetrate through and promote grass growth. Stadia X can also be installed within temporary structures to enable staff working environments or comfortable accommodation areas.

Fast assembly and breakdown. Developed with the user in mind, making it one of the most straightforward temporary flooring systems available. The “T-peg” design and the unique integrated cam locks allow rapid deployment, with the minimum of manpower and no specialist tools. One person can lay up to 70 m² within an hour

The multi-directional anti-slip surface makes Stadia X one of the safest temporary flooring solutions available.

Material: PPCP

Panel size: 287.5mm x 287.5mm

Sheet Size: 2.3m x 1.15m
or 1.15m x 1.15m

Panel thickness: 30mm

Panel weight: 1330g (8.19kg per m²)

Suitable Surfaces: Turf, soil, sand, gravel, snow, grass.

Ambient Temperature range: -49 – +50 °C

Max Gross vehicle weight: 2,500kg*

Max Static Load: Up to 80,000kg per m²

Operating Parameters:

- Self-draining, inert and non-conductive.
- Multi Directional Anti slip surface.
- Resistant to solvents and non-corroding.
- Resistant to UV damage.
- Manually deployed and can be laid in straight runs or pads.
- Deployment of up to 70m² per hour per person.

*Ground dependant.

STADIA X LITE

Stadia X Lite temporary flooring is unique, incredibly durable and flexible, creating a firm surface for shelters, tents, walkways and other structures.

Stadia X Lite can withstand up to 30,000 Kg load per m² whilst still retaining an easy deployment system that requires no tools or training.

Built to contend with the toughest conditions

Stadia X Lite is the smart, reusable choice that comes with all the additional edging, cable covers, and ramps needed for your installation. With a multi-directional anti-slip surface making this one of the safest flooring solutions available today.

Easy to use – with little effort

Stadia X Lite was developed by industry specialists who understand that temporary flooring must perform quickly and with zero complications. Designed to be implemented with minimum manpower and no tools, the T-peg system allows for rapid deployment.

Easy to maintain

Stadia X Lite can be washed or high-pressure hosed and can withstand all standard cleaning agents. This saves time and keeps the flooring system in perfect condition year after year.



Material: PPCP

Ambient Temperature range: -49 – +50 °C

Panel size: 287.5mm x 287.5mm

Max Gross vehicle weight: 2,000kg*

Sheet Size: 1.15m x 0.8625m
1.15m x 1.15m
or 2.3m x 1.15m

Max Static Load: Up to 30,000kg per m²

Panel thickness: 18mm

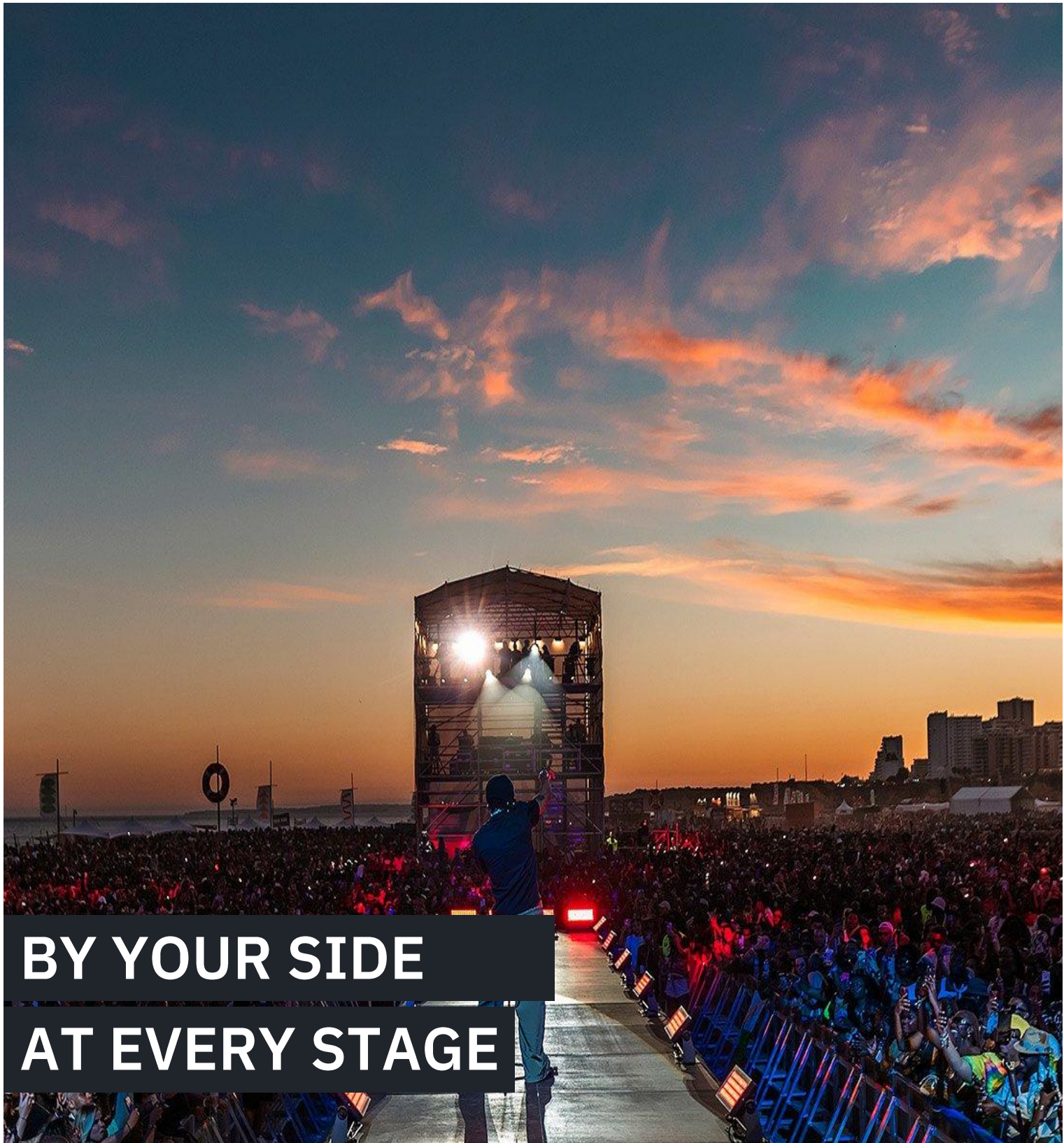
Operating Parameters:

Panel weight: 325g (3.95kg per m²)

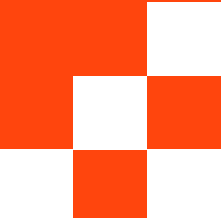
- Self-draining, inert and non-conductive.
- Multi Directional Anti slip surface.
- Resistant to solvents and non-corroding.
- Resistant to UV damage.
- Manually deployed and can be laid in straight runs or pads.
- Deployment of up to 70m² per hour per person.

Suitable Surfaces: Turf, soil, sand, gravel, snow, grass.

*Ground dependant.



**BY YOUR SIDE
AT EVERY STAGE**



**PROVEN PERFORMANCE +
QUALITY SERVICE YOUR
STADIUM DESERVES**

From boxing matches to rock concerts and the Olympics, The Box Group has a 20-year history of transforming stadiums into unforgettable experiences in multi-functional sports and entertainment destinations.

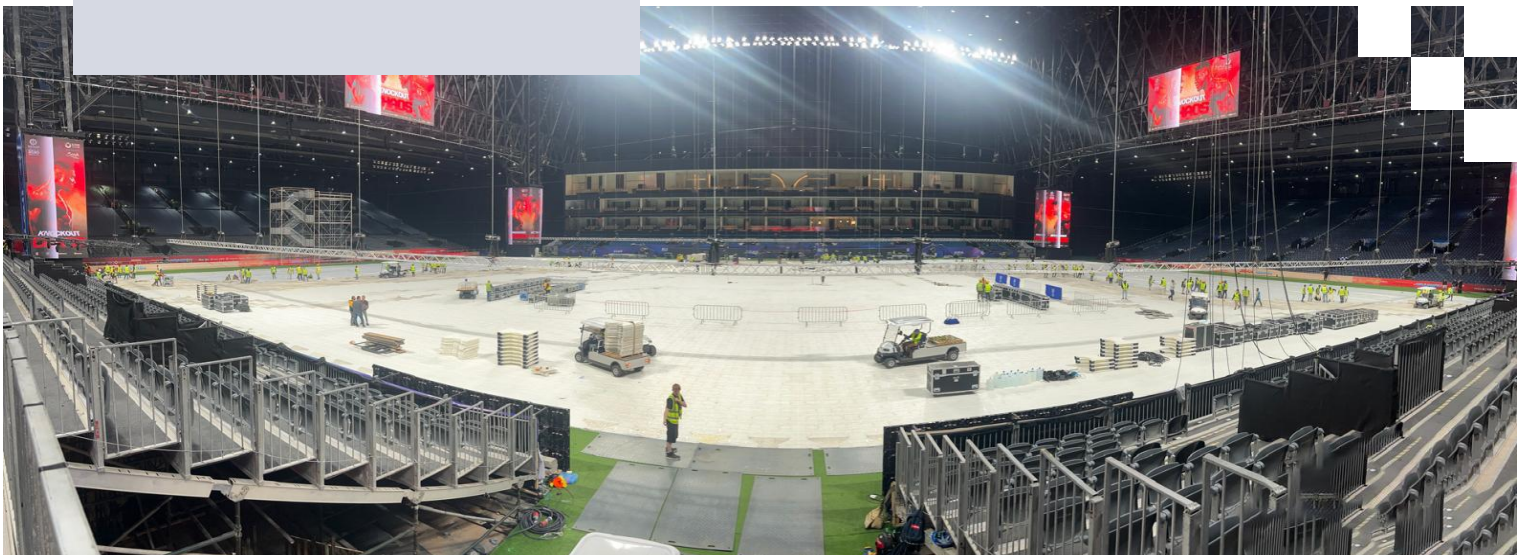
We go beyond quick fixes. The Box Group builds partnerships that deliver lasting value to all our clients.

Our collaborative approach ensures each solution is a strategic enhancement to your venue's capabilities, not just a short-term answer.

We partner with you, understanding your immediate needs while keeping your long-term goals in mind. This commitment to excellence drives us to provide solutions that respect both your present challenges and future aspirations.



WE GO IN WITH YOU AT
BASE LEVEL, TO **DELIVER**
THE FOUNDATIONS YOU
NEED TO GET
OPERATIONAL.



WE KNOW IT'S A TEAM GAME

Trust our team to support your objectives and back you all the way. We are:



GROUNDING

Our wide-ranging experience and pragmatic approach mean that we always consider the practicalities required to deliver incredible spaces. We build solid foundations from the start.



RESILIENT

Every installation presents challenges. When we encounter obstacles, we think with a positive 'can do' mindset and find ways to overcome them. We don't give up.



INVENTIVE

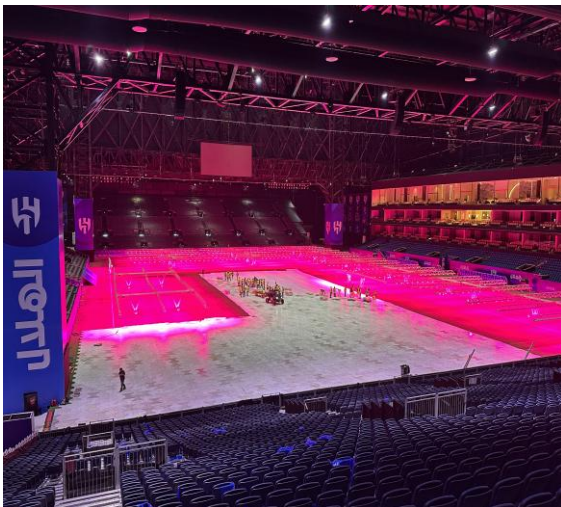
We thrive on 'one-off' or unusual scenarios where there may be no known precedent. That's when we adapt our thinking, products and our mindset to deliver a truly innovative solution. We find a way.



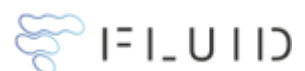
DEPENDABLE

We know that we'll only earn your trust if we deliver on our promises, so we go further to deliver what you need every single day, no matter how demanding the challenge. We won't let you down.

TRIED & TESTED IN SPORTS VENUES WORLDWIDE



- Our solutions cover the globe. Our experience spans over two decades.
- In the most challenging conditions and testing timescales, when there's no room for error, our clients trust us to think and deliver.
- We are ISO 9001 Quality Management certified
- We work on the ground with:





THANK YOU

When the outcome of your mission or operation hinges on having the solid foundations for your temporary structures in place, fast.

We're here for you.

The Box Group
17-19 ST Georges Street
Norwich
NR3 1AB

T: +44 (0)203 286 7463

E: hello@theboxgrp.com

